

Concerto No. 10 in B Minor (RV 580)

Allegro

Tutti

Solo

6

14

22

27

40

53

57

70

93

98

p *f* *p* *f*

Largo

Musical notation for measures 1-6 of the Largo section. The key signature is two sharps (F# and C#) and the time signature is 3/4. The notation includes quarter notes, eighth notes, and rests.

Solo

Tutti

Musical notation for measures 7-13 of the Tutti section. The notation features eighth notes and quarter notes with dynamic markings.

Larghetto

Musical notation for measures 14-19 of the Larghetto section. The key signature changes to one sharp (F#) and the time signature changes to 3/4. The notation includes quarter notes and a half note.

sempre piano

20

Musical notation for measures 20-26 of the Larghetto section, consisting of continuous eighth-note patterns.

27

Musical notation for measures 27-33 of the Larghetto section, consisting of continuous eighth-note patterns.

AdagioLargo

Musical notation for measures 34-39 of the AdagioLargo section. The time signature changes to common time (C) and then back to 3/4. The notation includes quarter notes and a half note.

Allegro

Musical notation for measures 40-47 of the Allegro section. The key signature changes to one sharp (F#) and the time signature changes to 6/8. The notation includes quarter notes and eighth notes.

p

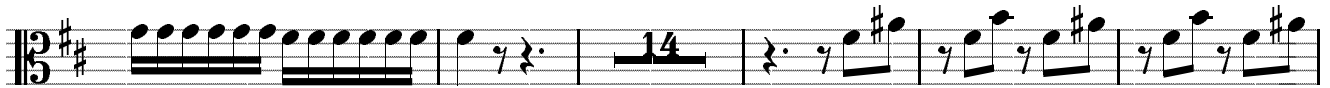
8

Musical notation for measures 48-54 of the Allegro section, featuring dynamic markings *f*, *p*, and *f*.

15

Musical notation for measures 55-60 of the Allegro section, featuring eighth-note patterns.

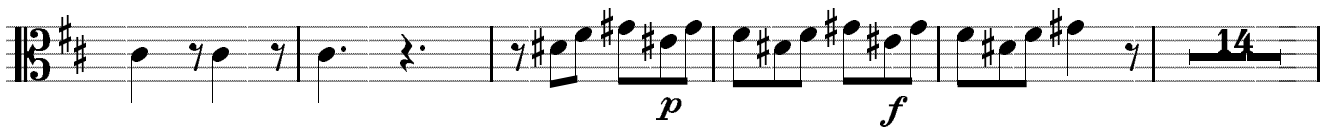
21



40



58



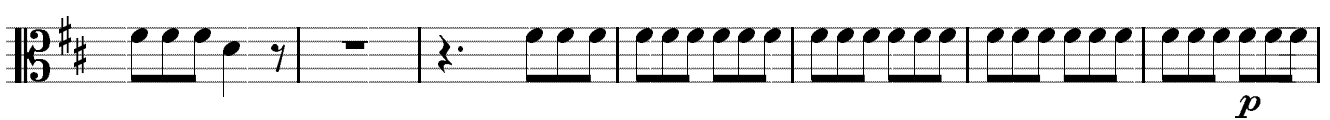
77



82



88



95



106



112



117



121

