

W.A. Mozart

Symphony No. 41 in C Major (“Jupiter”), K. 551

Viola



Mozart Symphony No. 41 in C Major ("Jupiter"), K. 551

Viola

Allegro vivace.

The image displays a page of musical notation for the Viola part of Mozart's Symphony No. 41 in C Major. The score is written in 3/4 time and begins with a treble clef. The tempo is marked 'Allegro vivace'. The notation includes various dynamics such as *f* (forte) and *p* (piano), and features several triplet markings. The score is divided into measures, with measure numbers 7, 13, 17, 23, 41, 49, 53, 60, 69, and 77 indicated on the left side of the page. The music consists of a series of rhythmic patterns, including eighth and sixteenth notes, often grouped in triplets or pairs. The key signature is one sharp (F#), indicating C major.



85

94

100

108

113

118

127

134

139

144

149

156



165

170

f

177

p

182

p

190

p

f

p

197

f

201

205

210

p

220

225

f

232



238

242

250

258

264

271

278

284

291

298

303

308



II.

Andante cantabile.
con sordino

8 *p* *f* *p* *f* *p* *f*

13 *p* *f*

19 *p* *f* *p*

23 *fp* *fp*

31 *fp* *fp* *fp* *fp* *fp*

39 *cresc.* *f*

47 *p*

51 *f p* *f p*

57 *fp* *fp* *fp* *fp* *fp* *fp* *fp*

64

68 *f* *p* *f*

ff



72

76 *f p f p*

85

93 *cresc. f p f p*

98 *f p f f p*

pp

III.

Allegretto.

11 *p f*

19 *p*

30 *f*

41

56 *f* Trio

67 *p*

76 *f p*

Menuetto da capo



IV.

Molto Allegro.

Musical score for Viola, measures 12-106. The score is in 3/8 time and C major. It features a variety of rhythmic patterns, including eighth and sixteenth notes, and rests. Dynamics range from *p* (piano) to *f* (forte). Fingerings are indicated by numbers 1-4. A triplet of eighth notes is marked with a '3' above it. The score is divided into systems, with measure numbers 12, 20, 27, 34, 51, 60, 69, 77, 88, 98, and 106 marked at the beginning of their respective systems.



113



123



131



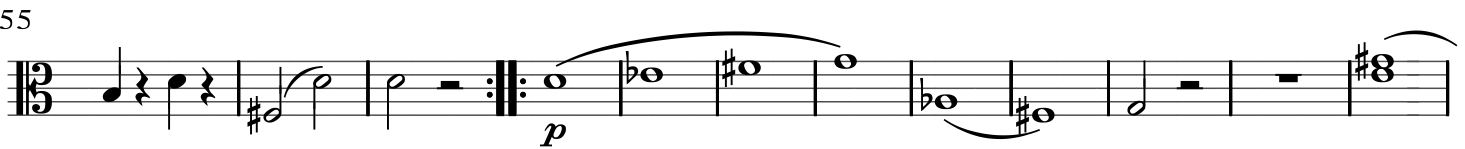
139



147



155



167



177



185



193



203



215



327 *sf sf*

335

343 *p*

352 1. 2. *f*

361 2 *p f*

374 *tr*

384 *tr*

393

403

411

417

