

338 L

ff ff

Detailed description: Musical staff 338-365. Measures 338-365. Includes a first ending bracket labeled 'L' spanning measures 343-350. Dynamics: ff.

366 M

ff ff

Detailed description: Musical staff 366-377. Includes a second ending bracket labeled 'M' spanning measures 371-377. Dynamics: ff.

378

ff

Detailed description: Musical staff 378-385. Dynamics: ff.

386 N Bassi. etc. x 3

p

Detailed description: Musical staff 386-410. Includes a first ending bracket labeled 'N' spanning measures 386-393. Dynamics: p.

411

poco cresc. - - - - -

Detailed description: Musical staff 411-420. Dynamics: poco cresc.

421

più cresc. - - - - ff

Detailed description: Musical staff 421-427. Dynamics: più cresc., ff.

428

Detailed description: Musical staff 428-436.

437

ff

Detailed description: Musical staff 437-443. Dynamics: ff.

444

Detailed description: Musical staff 444-450.



II.

Allegretto. (♩ = 76)

A Vln. 2

B Vln. 1

75 **C**

89

102 **D** [major]

Bassi

140

E

175

F [fugato]

209

Bassi

G

215

[major]

235

H [minor]



III.

Presto. (♩ = 132)

Bassi

18 **Bassi**

42 **Bassi**

81 **Bassi** **A**

93 **Bassi** etc. x 3 **Bassi**

127

140

152 **Assai mono presto**

215



227 **Presto** Bassi

256

266

288 **B** Bassi

321 Bassi Bassi

352 **C**

381 Bassi Bassi

etc. x 3

396

408 **Assai meno presto**



471 *ff*

484 **Presto**

512 **Bassi**

523 **Bassi**

557 **Bassi**

588 **D**

617 **Bassi** etc. x 3 **Bassi**

632

644 **Coda** **Assai meno presto** **Presto**



IV.

Allegro con brio. (♩ = 72) %

Musical score for Trumpet 1 in D, measures 1-131. The score is in 2/4 time and consists of ten staves of music. The tempo is Allegro con brio (♩ = 72). The key signature is one sharp (F#). The score includes various dynamics such as *ff*, *sf*, *f*, *p*, and *ten.* (tutti). It also features first and second endings, and a section marked [Dal segno].

Measures 1-11: *ff*, %

Measures 12-22: 1. *sf sf sf sf sf sf sf*, 2. *sf sf sf*

Measures 23-32: *ff*

Measures 33-43: **A**, *ff*

Measures 44-59: *f*, *f*, *f*, *f*, *p*

Measures 60-84: **B** *ten.*, *f*, *f*, *f*, *f*, *p*

Measures 85-103: *ten.*, *f*, *f*, *p*, Oboes.

Measures 104-119: **C**, *ff*, *sf sf sf sf sf sf sf sf*, *sf sf*

Measures 120-130: 1. *sf sf sf ff*, 2. [Dal segno] *ff*

Measures 131-140: *sf sf sf sf sf sf*



147 **Vln 1.** **D**

162

173

188

200 **E** **Flutes**

230 **F**

242

251

261

277 **G**

The image shows a page of a musical score for Violin 1 and Flutes. The score is in 4/4 time and consists of 11 staves of music. The first staff (measures 147-161) is for Violin 1 and is marked with a 'D' in a box. It begins with a 4-measure rest, followed by a series of eighth notes with slurs and accents, and dynamic markings of *f* and *sf*. The second staff (measures 162-172) continues the Violin 1 part with similar notation and dynamic markings. The third staff (measures 173-187) shows the Violin 1 part with a 6-measure rest and then continues with eighth notes. The fourth staff (measures 188-199) continues the Violin 1 part. The fifth staff (measures 200-229) is for the Flutes and is marked with an 'E' in a box. It features a 3-measure rest, a 17-measure rest, and then a series of eighth notes. The sixth staff (measures 230-241) is for the Flutes and is marked with an 'F' in a box. It begins with a *ff* dynamic marking and a series of eighth notes. The seventh staff (measures 242-250) continues the Flutes part. The eighth staff (measures 251-260) continues the Flutes part. The ninth staff (measures 261-276) continues the Flutes part. The tenth staff (measures 277-286) is for the Flutes and is marked with a 'G' in a box. It begins with a series of eighth notes and dynamic markings of *f*, followed by a 3-measure rest and a 6-measure rest.



295 *ten.*
f f f f **6** *f f f f* **13**

323 Clarinets **H**
ff sf sf sf sf sf

336
ff sf sf sf sf sf sf sf sf sf sf

350
sf

359 **I**
f

375
sf f f f f

386
f f f

401
f f f f f f

412 **K**
sempre più f ff

422



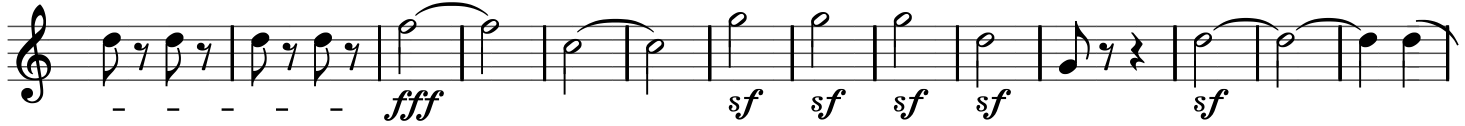
430



441



452



466

