

Concerto No. 10 in B Minor (RV 580)

Allegro

Tutti

Solo

6

14

22

27

40

53

57

70

93

98

*p* *f* *p* *f*

# Largo

Musical notation for measures 1-6 of the Largo section. The key signature is one sharp (F#) and the time signature is 3/4. The notation includes quarter notes, eighth notes, and rests.

Solo

Musical notation for measures 7-13 of the Largo section. Measure 7 is marked with a slur and a fermata. The notation includes quarter notes, eighth notes, and rests.

Tutti

# Larghetto

Musical notation for measures 14-19 of the Larghetto section. Measure 14 has a fermata. Measure 15 has a 3/4 time signature. The notation includes quarter notes and eighth notes.

*sempre piano*

Musical notation for measures 20-26 of the Larghetto section. The notation consists of continuous eighth-note patterns.

Musical notation for measures 27-33 of the Larghetto section. The notation consists of continuous eighth-note patterns.

# AdagioLargo

Musical notation for measures 34-39 of the AdagioLargo section. Measure 34 has a fermata. Measure 35 has a common time signature (C). Measure 36 has a 3/4 time signature. The notation includes quarter notes, eighth notes, and rests.

# Allegro

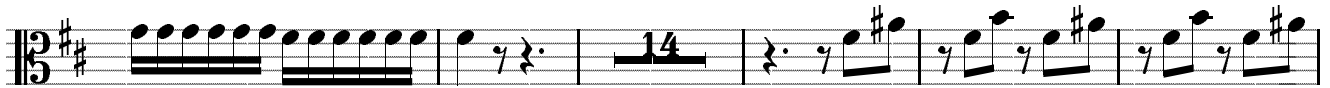
Musical notation for measures 1-7 of the Allegro section. The key signature is one sharp (F#) and the time signature is 6/8. The notation includes quarter notes, eighth notes, and rests.

*p*

Musical notation for measures 8-14 of the Allegro section. The notation includes quarter notes, eighth notes, and rests. Dynamic markings *f*, *p*, and *f* are present.

Musical notation for measures 15-21 of the Allegro section. The notation includes quarter notes, eighth notes, and rests.

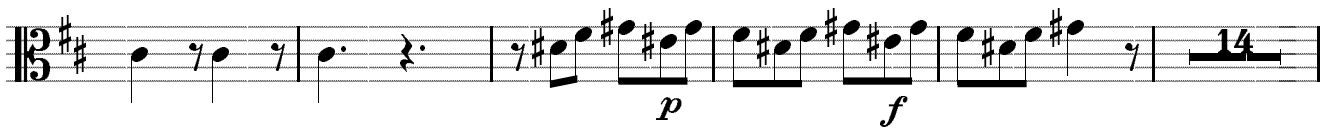
21



40



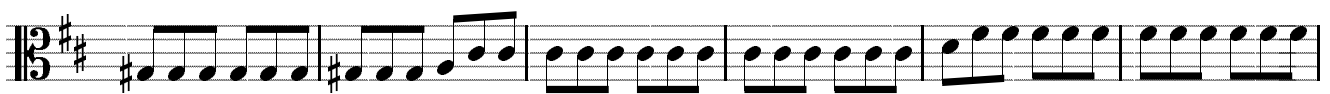
58



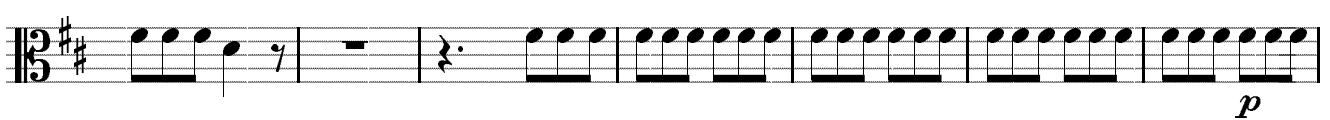
77



82



88



95



106



112



117



121



