

Concerto No. 8 in A Minor (RV 522)

Allegro

5

12

18

23

29

39

44

51

55

p

p

f

6

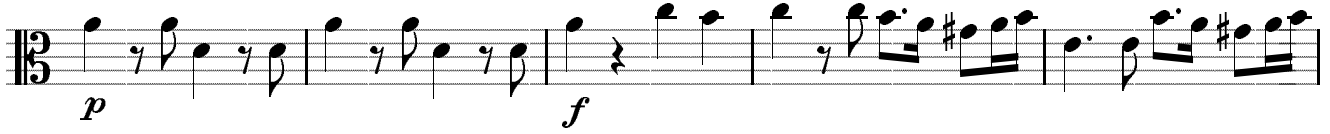
2

Detailed description: This is a page of musical notation for the first movement of Vivaldi's Concerto No. 8 in A Minor. The music is written in treble clef with a 3/8 time signature. The key signature has one flat (B-flat). The tempo is marked 'Allegro'. The score is divided into ten staves, each beginning with a measure number. The first staff starts with a treble clef and a common time signature 'C'. The music features a variety of rhythmic patterns, including eighth and sixteenth notes, and rests. Dynamics are indicated by 'p' (piano) and 'f' (forte). There are also articulation marks such as slurs and accents. At the end of the 29th and 44th measures, there are bracketed numbers '6' and '2' respectively, likely indicating fingerings or bowings. The piece concludes with a final sixteenth-note flourish on the 55th measure.

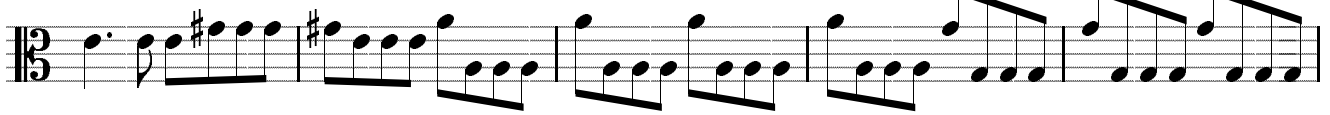
60



66



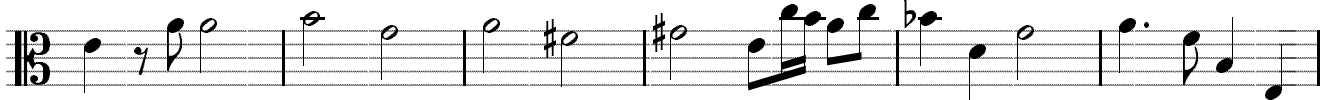
71



76



80



86



Larghetto e spiritoso



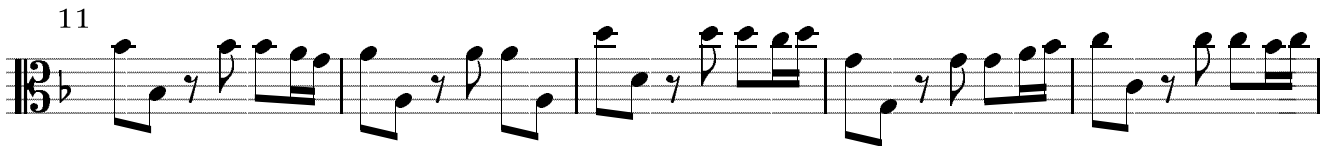
pp sempre

First musical staff, measures 1-5. The music is in 3/4 time with a key signature of one flat. It features a rhythmic pattern of eighth and sixteenth notes.



6

Second musical staff, measures 6-10. Continues the rhythmic pattern from the first staff.



11

Third musical staff, measures 11-15. Continues the rhythmic pattern.



16

Fourth musical staff, measures 16-20. Continues the rhythmic pattern.



21

Fifth musical staff, measures 21-25. Includes a chromatic alteration in measure 24.



26

Sixth musical staff, measures 26-30. Continues the rhythmic pattern.



31

Seventh musical staff, measures 31-35. Continues the rhythmic pattern.



36

Eighth musical staff, measures 36-40. Continues the rhythmic pattern.



41

nine musical staff, measures 41-45. Ends with a fermata on the final note. *f*

Allegro

4

12

15

35

13

p

59

f p f p f

68

76

85

27

spiccato p

119

f

129

139

f

