

Concerto No. 6 in A Minor (RV 356)

Allegro

6

11

16

21

*p* *f*

26

32

37

42

47

Detailed description: This image shows a page of musical notation for the Concerto No. 6 in A Minor (RV 356) by Vivaldi. The score is written for a single instrument in bass clef, common time (C), and is marked 'Allegro'. The page contains ten staves of music, each beginning with a measure number: 6, 11, 16, 21, 26, 32, 37, 42, and 47. The notation includes various rhythmic values such as eighth and sixteenth notes, rests, and accidentals (sharps and naturals). Dynamic markings '*p*' (piano) and '*f*' (forte) are present at measures 21 and 22. The key signature is A minor, indicated by a single sharp (F#) on the first staff.

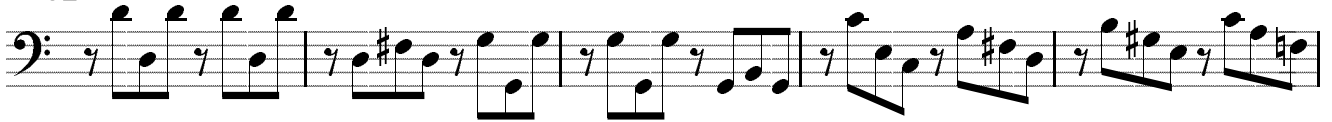
52



57



62



67



71



76

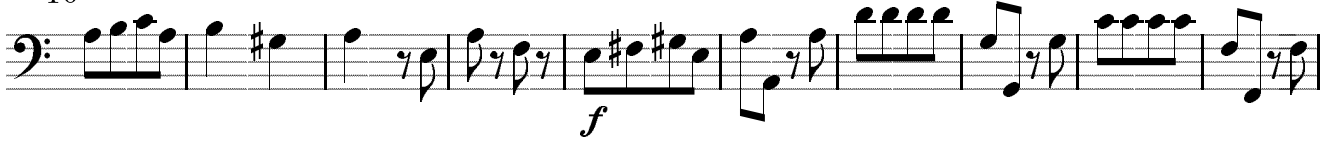


Largo tacet.

Presto



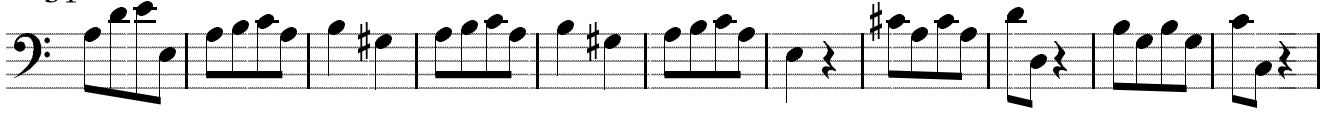
10



20



31



42



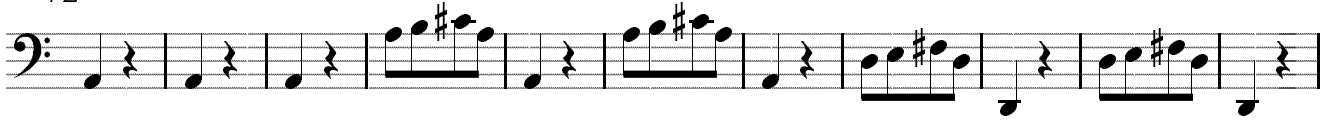
52



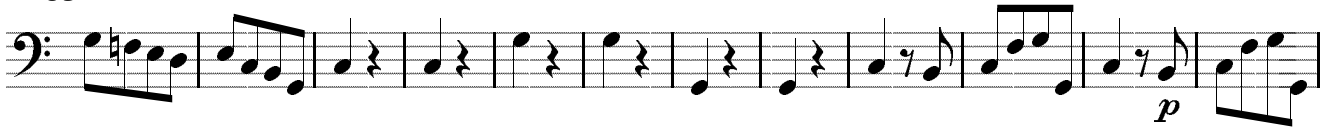
61



72



83



95



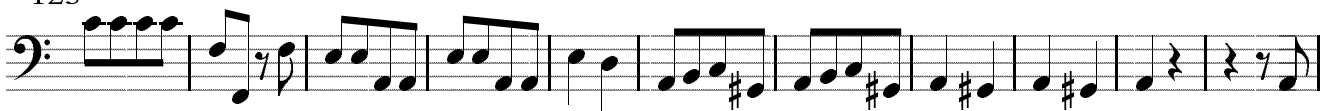
104



115



125



136



