

Concerto No. 2 in G Minor (RV 578)

Adagio e spiccato

6

12

Allegro

17

Solo

43 *f* Tutti

46

49

52

57

64

70

73

77

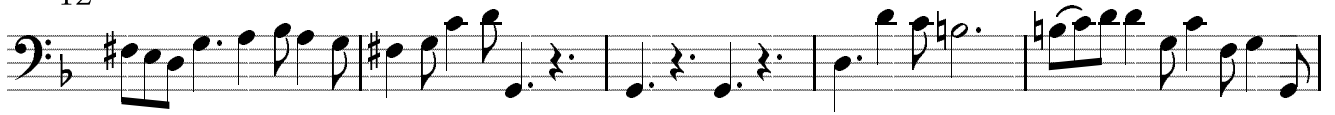
# Larghetto

Musical score for the 'Larghetto' section, measures 1-42. The score is written in bass clef with a 3/4 time signature and a key signature of one flat (B-flat). The dynamics range from *p* (piano) to *f* (forte). The section includes markings for *Solo* and *Tutti*. Measure 14 has a first ending bracket. Measure 21 has a *Tutti* marking. Measure 35 has a *Solo* marking. Measure 42 has a *Tutti* marking. The section concludes with a double bar line.

# Allegro

Musical score for the 'Allegro' section, measures 1-8. The score is written in bass clef with a 12/8 time signature and a key signature of one flat (B-flat). The tempo is marked *Allegro*. The music features a more active and rhythmic pattern compared to the 'Larghetto' section.

12



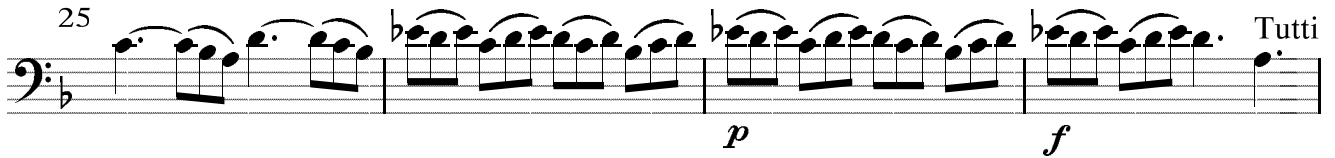
17



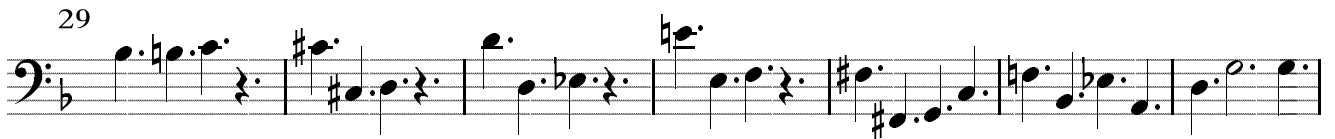
21



25



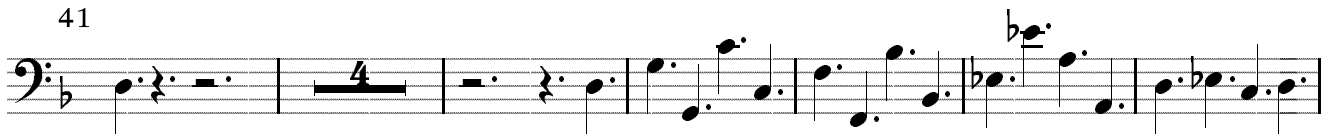
29



36



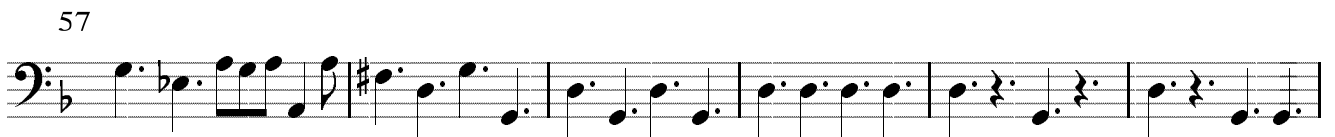
41



51



57



63



67



