

# **Mozart Symphony No. 40 in G-minor, first version, K.550**

## **Horn II in B-flat**



# Mozart Symphony No. 40 in G-minor, first version, K.550

## Horn II in B-flat

Molto Allegro

15 *f* *sf*

35 *sf sf sf sf sf* *p* *cresc.* *f*

80 *f*

95

115 *f*

124

136 *sf sf sf sf sf*

159 *p* *f*





## II.

Andante

11

34

49

60

71

84

97

118

*p*

*f*

*sf*

*p*

*f*

*sf*

*p*



# III.

## Allegretto

8

15

28

36

60

74

*f*

*p*

*cresc.*

*f*

*p*

*p*

*p*

*f*

*p*

Trio

D.C. Menuetto



# IV.

Allegro assai

Musical score for Horn 2, measures 1-230. The score is in 4/4 time and features various dynamics and articulations. The notation includes eighth notes, quarter notes, and half notes, with some measures containing rests. The score is divided into systems, with measure numbers 10, 20, 31, 41, 57, 121, 202, and 213 marked at the beginning of their respective lines. Dynamics include *f* (forte), *sf* (sforzando), and *f* (forte). Articulations include accents and slurs. Some measures contain multi-measure rests for 2, 6, 54, 32, and 40 measures. The score ends with a double bar line at measure 230.



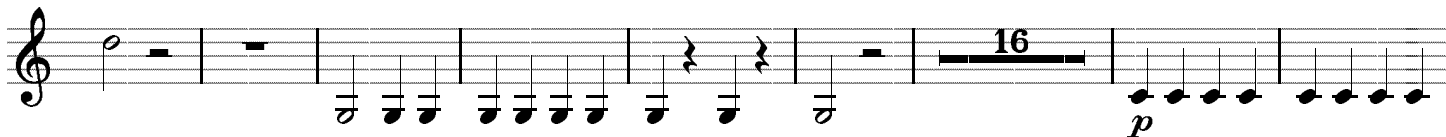
223



232



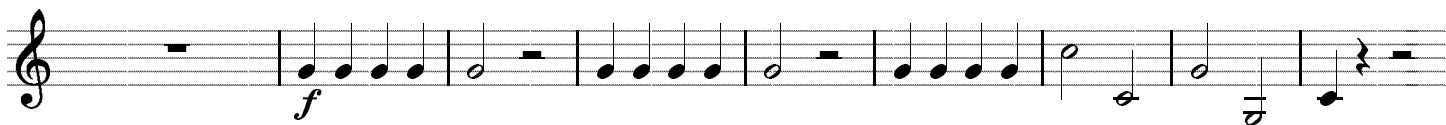
241



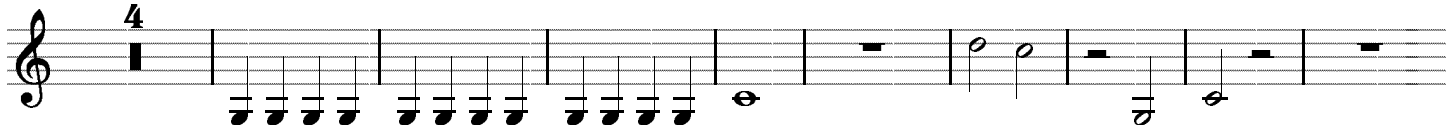
265



277



286



299

