

Mozart Symphony No. 6 in F-major, K.43 (1767)

Violin I



Mozart Symphony No. 6 in F-major, K.43 (1767)

Violin I

Allegro

6

12

20

27

32

38

44

f

p

f

[cresc.]

tr

tr

tr

tr

fp

fp

fp

fp

fp

fp

tr



50

p *f*

58

p

66

f *p* *f* *tr*

72

p

79

84

f *fp* *fp* *fp* *fp* *fp* *fp*

90

fp *tr*

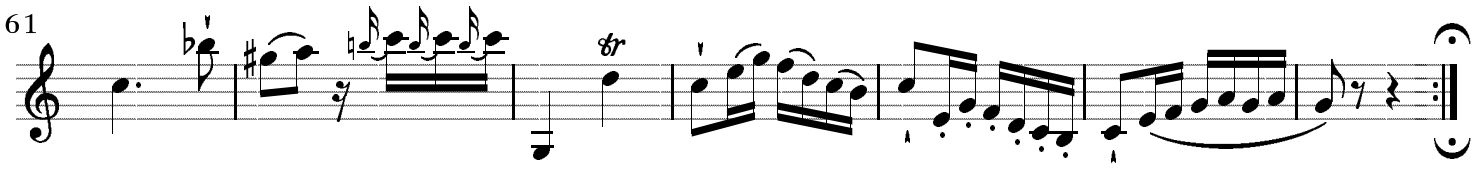
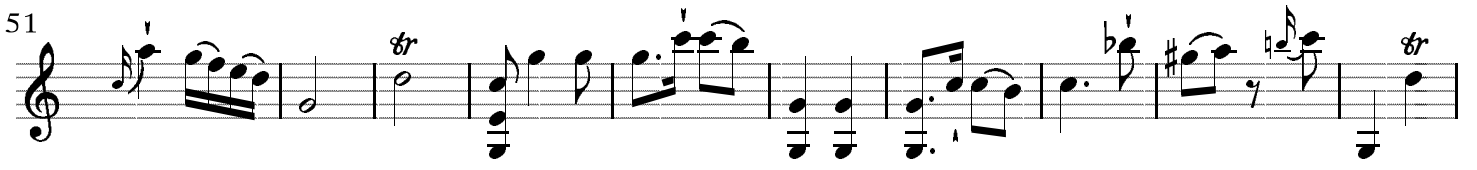
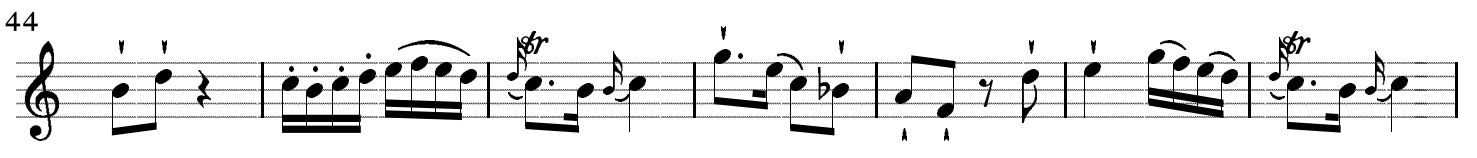
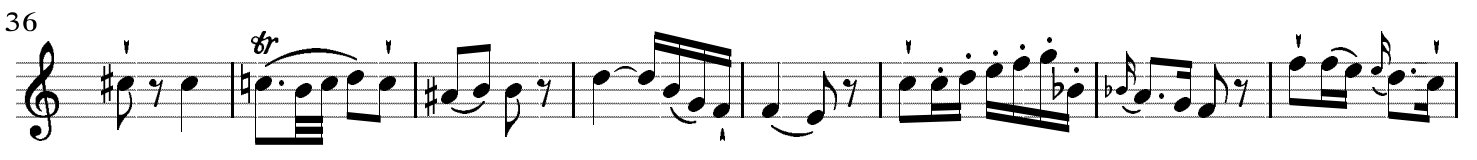
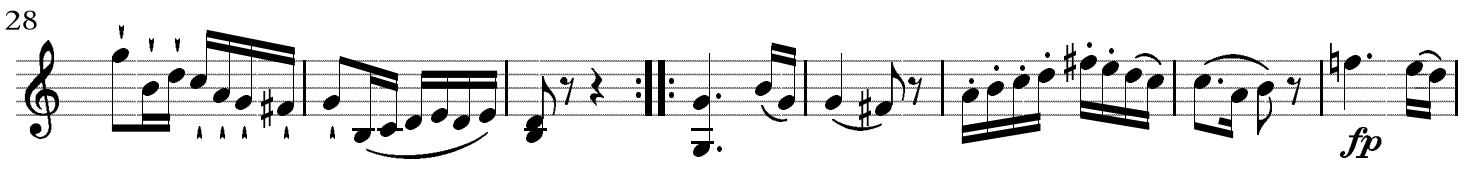
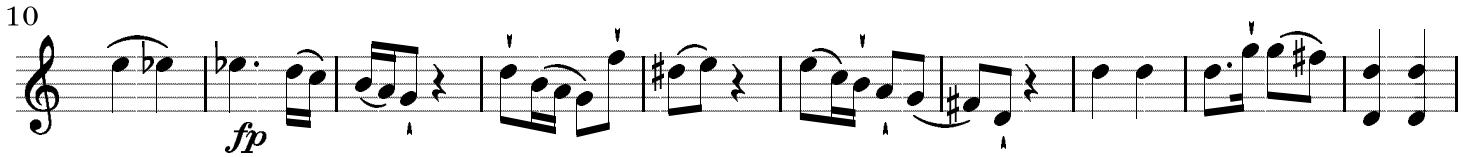
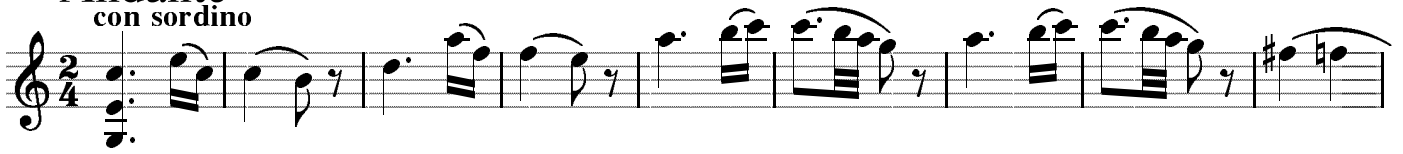
96

tr



II.

Andante
con sordino



III.

Menuetto

Musical score for Violin I, Menuetto, Trio section. The score is in 3/4 time and F major. It consists of five staves of music. The first staff (measures 1-6) begins with a forte (*f*) dynamic and features a triplet of eighth notes. The second staff (measures 7-13) includes a repeat sign and continues with triplet patterns. The third staff (measures 14-20) is the beginning of the Trio section, marked with a piano (*p*) dynamic and a key signature change to E-flat major. The fourth staff (measures 21-28) features a forte (*f*) dynamic and includes a repeat sign. The fifth staff (measures 29-35) concludes with dynamics of piano (*p*), fortissimo piano (*fp*), and forte piano (*fp*), ending with a repeat sign and the instruction "Menuetto da capo".



IV.

Allegro

10

17

24

32

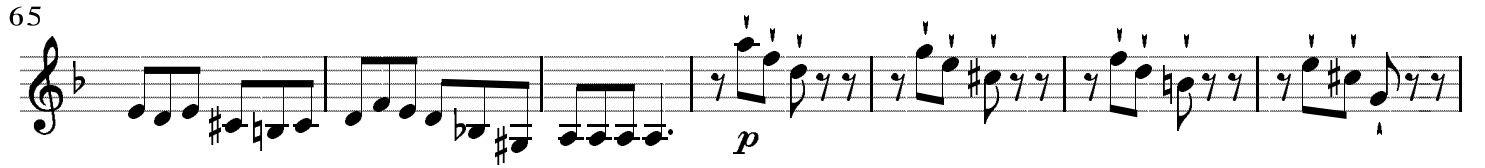
40

49

57

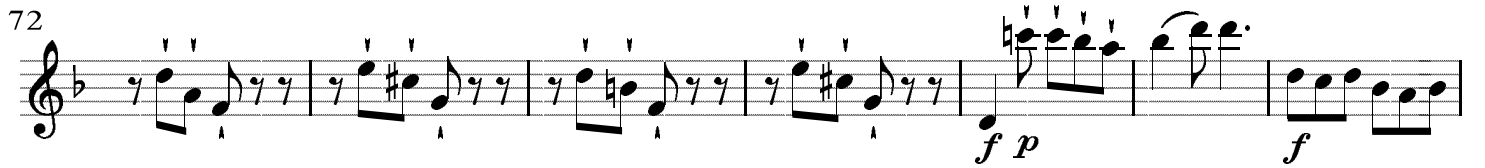


65



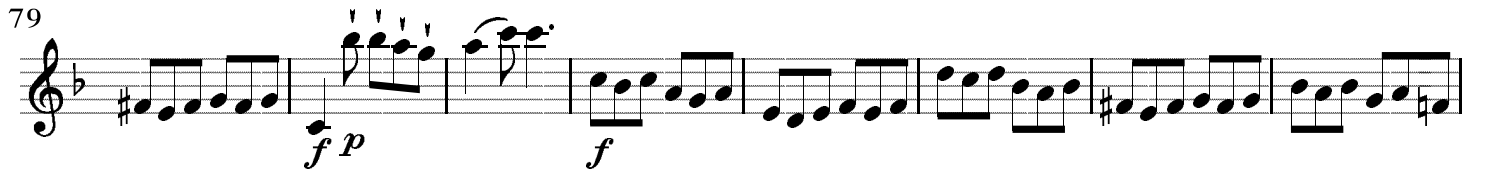
p

72



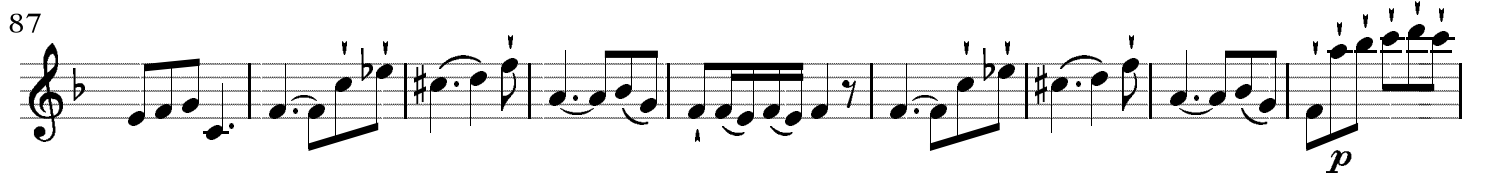
f p *f*

79



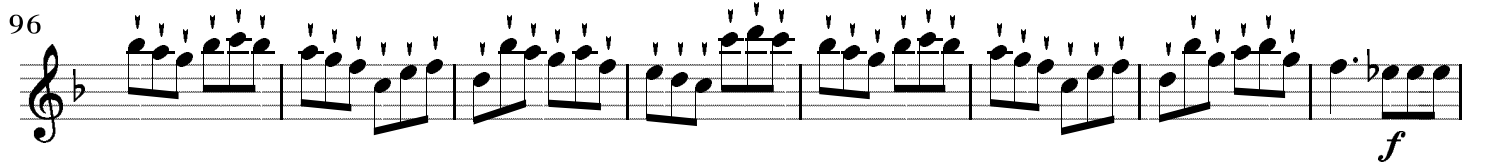
f p *f*

87



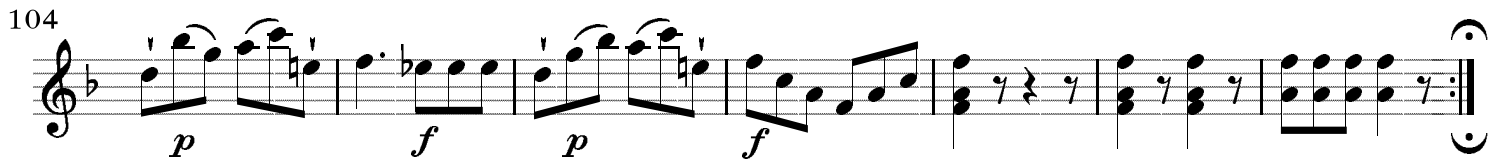
p

96



f

104



p *f* *p* *f*

