

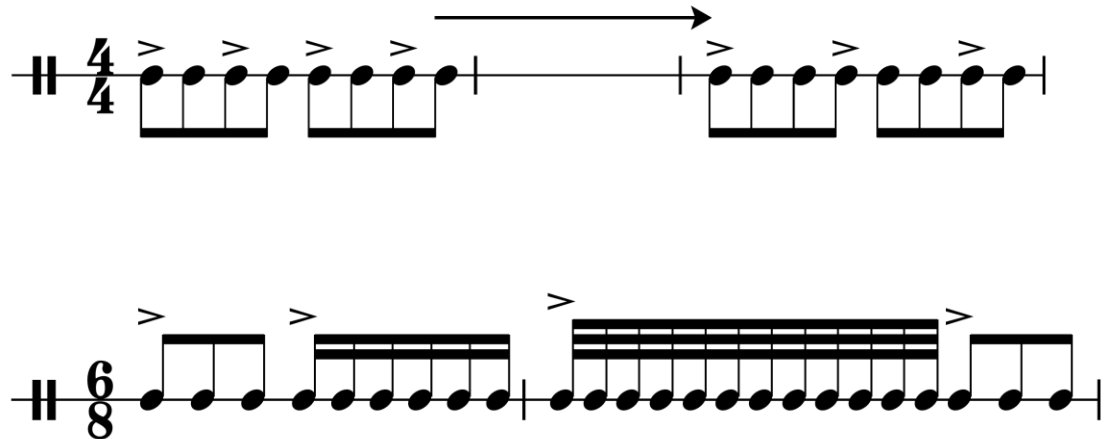
# MIDI Extensions

---

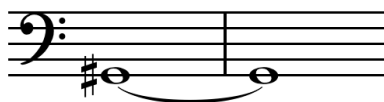
Music 253/CS 275A  
Stanford University

# MIDI shortcomings: Accent

- Barring
- Accent
- Beams
- Grouping



# Shortcomings: Duration, articulation



## Durations

- Ties (certain kinds)
- Ambiguity of articulation/  
instrumentation
- Matching written values to sounding values



## Articulations

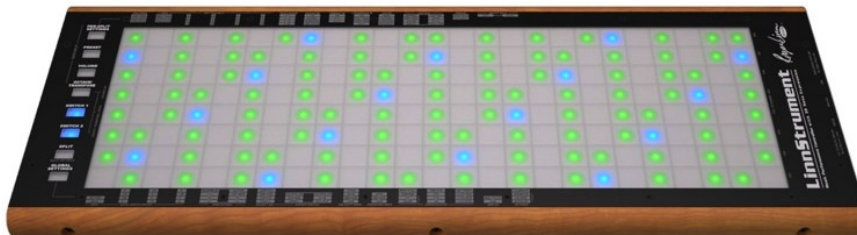
- Staccato
- Marcato
- Tentuto

# Expressive MIDI: Code vs. Controllers

(Making MIDI more competent for notation)

## Who: Cooper, Ng, Boyle

- **expEvent** (SysEx)
- Min length = 5 bytes
  - 0xF0 start of message
  - 0x7D non-commercial
  - <data bytes [2..n]>
  - 0xF7 end of message



Linnstrument

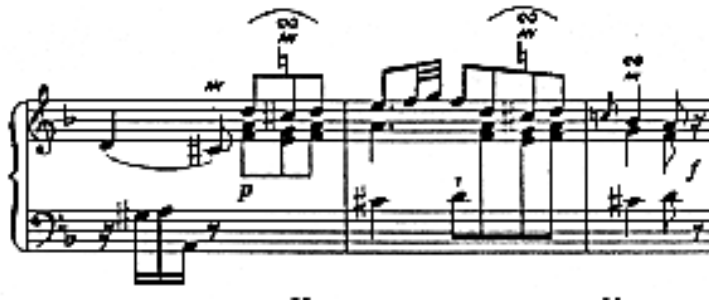
## Two encoding tables

- *Finale* [=Adobe] font list
- “Isolated” symbols
  - Articulation signs
  - Dynamics
  - Rests
  - Stems and tails
- Bit flags for graphical placement of adjunctive objects

# MIDI vs notation

**Extensible** symbols, with bit flags

- 8ve
- Pedal markings
- Trills
- Crescendos
- Beams
- Slurs



**Super objects** [MuseData]

Objects that subsume multiple more finite objects/events

- Beams
- Slurs

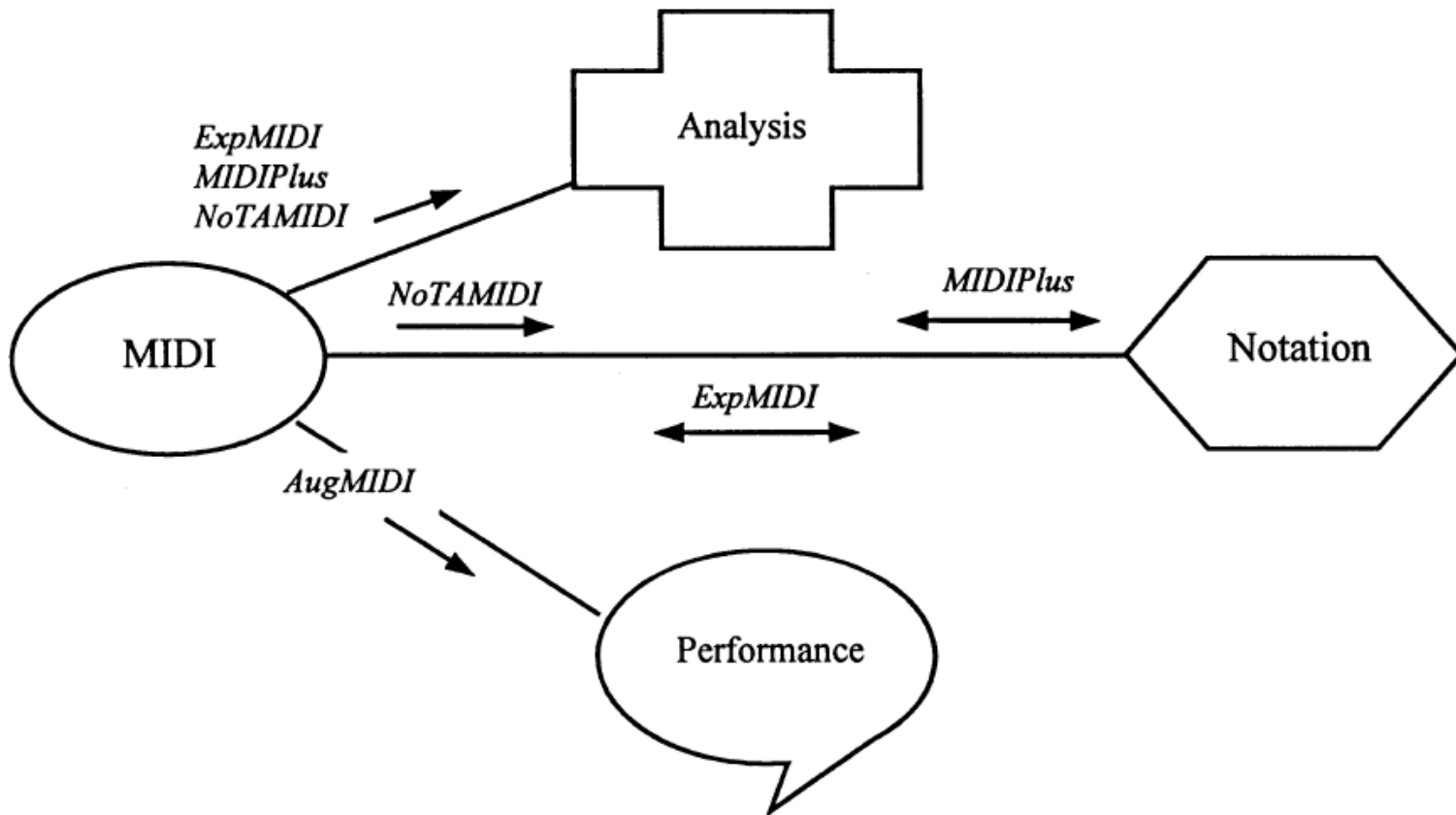


# Remedies: Overview

---

- **System-exclusive** messages: manufacturers
- Bit re-purposing: Mathews, Hewlett, et al.
- Addition of **control track**: researchers (Mathews et al.)

# Proposed (never adopted) extensions



# NotaMIDI (Kjell Nordli)

---

- Employed **meta-events** for extended info
  - Time signature
  - Key signature
  - Clef-sign
  - Crescendo, diminuendo
  - Accent
  - Slur
  - Enharmonic pitch
  - Tempo name (Allegro, Adagio, et al.)



# Expressive MIDI (Ng, Boyle, et al.)

- Based on **system-exclusive** messages

Data byte 1

0XXY<sub>1</sub>Y<sub>2</sub>Y<sub>3</sub>Y<sub>4</sub>Y<sub>5</sub>

Plus look-up table

	0	1	2	3	4	5	6	7	8	9
0		˘	//	#	4	⌘	♩	.	(	)
10		+	,	-			0	1	2	3
20	4	5	6	7	8	9				
30	>	♭:	≈	(b)	♯	¢	□	♩	<i>mf</i>	.
40	♩		)	□	○		(b)	◊	<i>mp</i>	♩
50	□	<i>sf</i>	∞	˘	♩	:	♩	◊	<i>fz</i>	⊕
60	 stem	⊗	^	-	□	⊕	b	c	□	♩

# Augmented MIDI (Mathews, Hewlett)

---

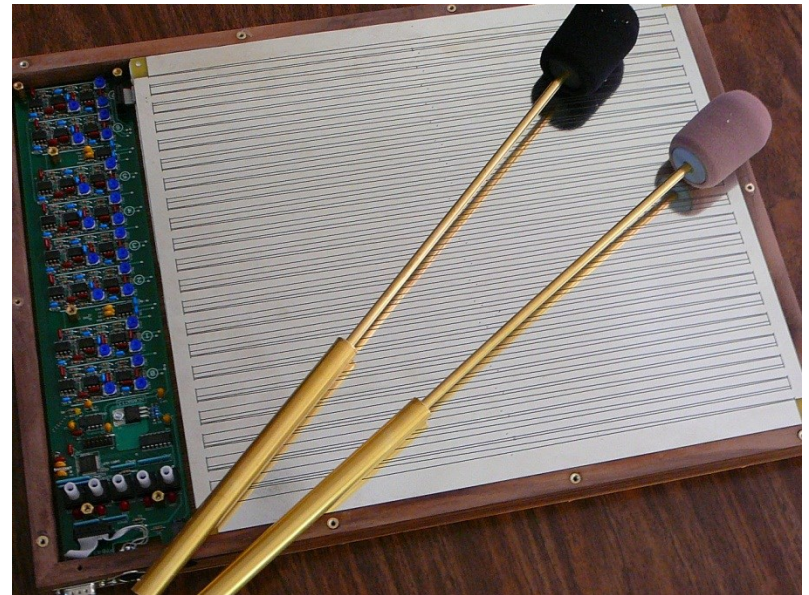
- Mathews's system based on bit repurposing
- For:
  - Accents
  - Articulations
- From:
  - Bits in the Note-On command OR
  - Bits from the Velocity byte

# Augmented MIDI (controller legacy)

## (How to accommodate gesture in MIDI)

---

- Who?: Max Mathews
- Method
  - Addition of “drum track”
- Gestural information
  - Accents
  - Articulations (incl. slurs)
- How?
  - Reassign two bits from **note-on command**



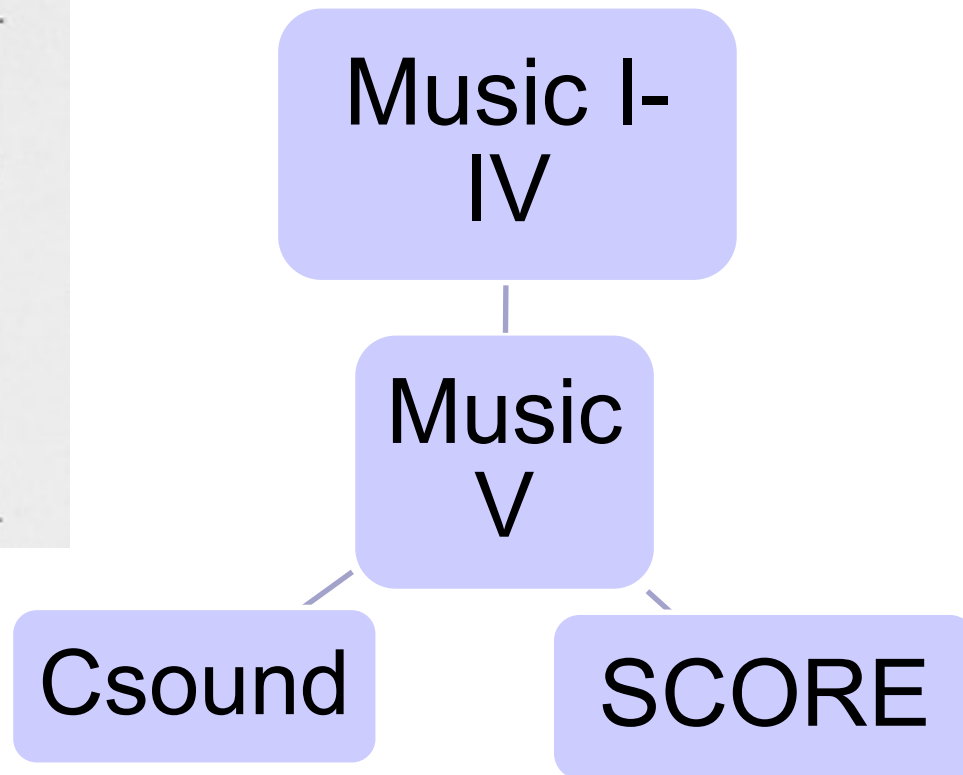
Max Mathews' Radio Baton

# Mathews' Music V (pre-MIDI)

[Owed a debt to Pierre Boulez's wish for similar control for tapes]

```
1  INS 0 1 ;  
2  ØSC P5 P6 B2 F2 P30 ;  
3  ØUT B2 B1 ;  
4  END ;  
5  GEN 0 1 2 0 0 .999 50 .999 205 -.999 306 -.999 461 0 511 ;  
6  NØT 0 1 .50 125 8.45 ;  
7  NØT .75 1 .17 250 8.45 ;  
8  NØT 1.00 1 .50 500 8.45 ;  
9  NØT 1.75 1 .17 1000 8.93 ;  
10 NØT 2.00 1 .95 2000 10.04 ;  
11 NØT 3.00 1 .95 1000 8.45 ;  
12 NØT 4.00 1 .50 500 8.93 ;  
13 NØT 4.75 1 .17 500 8.93 ;  
14 NØT 5.00 1 .50 700 8.93 ;  
15 NØT 5.75 1 .17 1000 13.39 ;  
16 NØT 6.00 1 1.95 2000 12.65 ;  
17  TER 8.00 ;
```

Music V: Sound generation, pre-MIDI



# Radio drum/baton file (c. 1988)

GEN2	3	0.0	2	1	1	0	.5	0	.25	0	This statement defines an instrument. Here a wave-form table for the clarinet is set up. GEN2 calls an oscillator subroutine. The parameters are (1) an operation code (3 = generate function), (2) an action time, (3) an instrument number, (4) a table number, and (5-10) the relative amplitudes of harmonics 1..6.
NOT	1	2	0.0	.5	1	440	These statements cause notes to be played. The initial parameters are (1) an operation code (1 = play note), (2) an instrument number, (3) a start-of-action time, (4) event duration, (5) an absolute amplitude for the event, and (6) event frequency (Hz). These parameters may be followed by a variable number of user-defined parameters (not shown).				
NOT	1	2	0.5	.5	2	554					
NOT	1	2	1.0	.5	3	660					
NOT	1	2	1.5	.5	4	554					
NOT	1	2	2.0	1.0	5	880					
NOT	1	2	3.0	.5	3	660					
NOT	1	2	3.5	.5	2	554					
NOT	1	2	4.0	.5	2	494					
NOT	1	2	4.5	.5	4	588					
NOT	1	2	5.0	1.0	5	740					

Example G1 Music V representation of Bars 1 and 2 of the Clarinet part of the Mozart trio.

## Beyond MIDI, Glossary

<http://beyondmidi.ccarh.org/beyondmidi-600dpi.pdf>

# Controller legacy in Malinowski's cranker

---

- Stephen Malinowski's "cranker" for electro-acoustic performances
  - <https://www.youtube.com/watch?v=EAWSonBN3Pk>

