

Concerto No. 8 in A Minor (RV 522)

Allegro

5

12

18

23

29

39

44

51

55

p

p

f

6

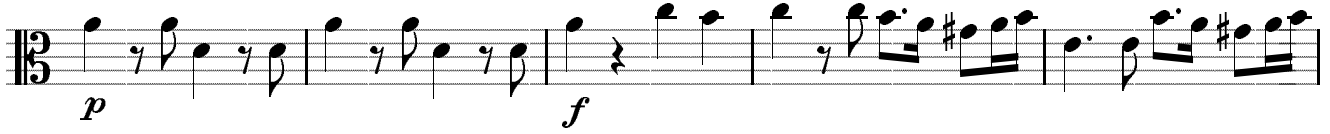
2

Detailed description: This is a page of musical notation for the first movement of Vivaldi's Concerto No. 8 in A Minor, RV 522. The tempo is marked 'Allegro'. The music is written in 3/8 time and the key of A minor. The score is divided into ten staves, each beginning with a measure number. The notation includes various rhythmic patterns, such as eighth and sixteenth notes, and rests. Dynamics are indicated by 'p' (piano) and 'f' (forte). There are also articulation marks like slurs and accents. At the end of some staves, there are numbers '6' and '2' which likely refer to fingerings or specific musical techniques. The overall style is characteristic of the Baroque period.

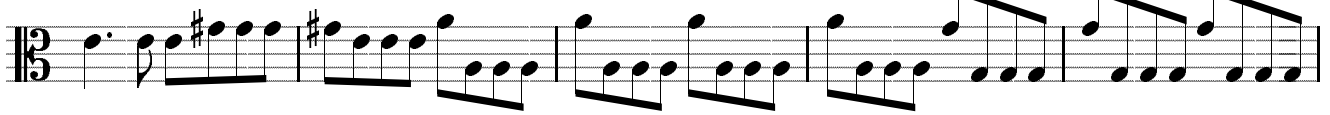
60



66



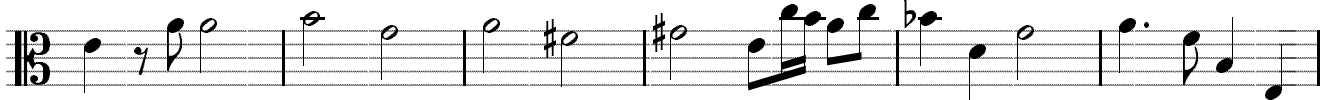
71



76



80



86



Larghetto e spiritoso



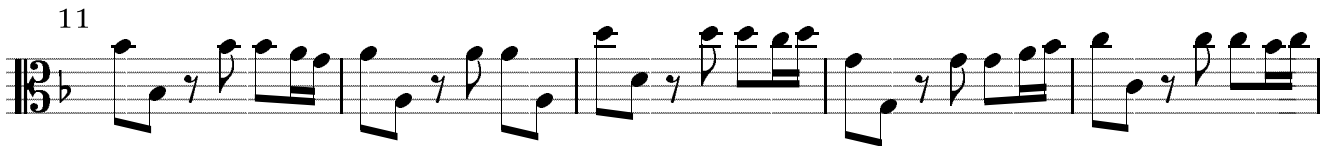
pp sempre

First musical staff, measures 1-5. The music is in 3/4 time with a key signature of one flat. It features a rhythmic pattern of eighth notes and quarter notes with slurs and accents.



6

Second musical staff, measures 6-10. Continues the rhythmic pattern from the first staff.



11

Third musical staff, measures 11-15. Continues the rhythmic pattern.



16

Fourth musical staff, measures 16-20. Continues the rhythmic pattern.



21

Fifth musical staff, measures 21-25. Includes a chromatic alteration in measure 24.



26

Sixth musical staff, measures 26-30. Continues the rhythmic pattern.



31

Seventh musical staff, measures 31-35. Continues the rhythmic pattern.



36

Eighth musical staff, measures 36-40. Continues the rhythmic pattern.



41

ninth musical staff, measures 41-45. Ends with a fermata on a half note. *f*

Allegro

4

12

15

35

13

p

59

f p f p f

68

b

76

#

85

27

spiccato

p

119

f

129

f

139

f

