

Mozart Symphony No. 41 in C Major ("Jupiter"), K. 551

Timpani in C, G

Allegro vivace.

The image displays a musical score for the Timpani part of Mozart's Symphony No. 41 in C Major, "Jupiter", K. 551. The score is written in bass clef with a 4/4 time signature. It begins with a forte (*f*) dynamic and an "Allegro vivace" tempo. The score is divided into measures, with measure numbers 12, 20, 42, 86, 117, 181, 194, 203, 225, and 236 marked at the start of their respective lines. The music features various rhythmic patterns, including eighth and sixteenth notes, and rests. Dynamics range from *f* to *sf* and *p*. There are several fermatas and repeat signs. The score concludes with a final measure marked with a fermata and the number 25.



269

f

2

This staff contains measures 269 through 278. It begins with a dynamic marking of *f*. A fermata is placed over the second measure, with a '2' above it. The music consists of eighth and quarter notes.

279

sf sf

This staff contains measures 279 through 287. It features dynamic markings of *sf* in measures 280 and 281. The music continues with eighth and quarter notes.

288

p

3

This staff contains measures 288 through 298. It starts with a dynamic marking of *p*. A fermata is placed over the first measure, with a '3' above it. The music includes eighth and quarter notes.

299

f

This staff contains measures 299 through 305. It begins with a dynamic marking of *f*. The music consists of eighth and quarter notes.

306

tr ~

This staff contains measures 306 through 312. It features a trill marking (*tr ~*) in measure 311. The music ends with a double bar line.

II
Tacet

III
Allegretto.

p *f*

2

This staff contains measures 1 through 12. It starts with a dynamic marking of *p* and ends with *f*. A fermata is placed over the first measure, with a '2' above it. The music is in 3/4 time and consists of eighth and quarter notes.

13

p

This staff contains measures 13 through 23. It begins with a dynamic marking of *p*. The music consists of eighth and quarter notes.

24

f

5

This staff contains measures 24 through 38. It starts with a dynamic marking of *f*. A fermata is placed over the last measure, with a '5' above it. The music consists of eighth and quarter notes.

39

f

8

This staff contains measures 39 through 56. It begins with a dynamic marking of *f*. A fermata is placed over the 18th measure, with an '8' above it. The music consists of eighth and quarter notes.

57

Trio

6 19

This staff contains measures 57 through 66. It starts with a dynamic marking of *f*. A fermata is placed over the 19th measure, with a '19' above it. The music is in 3/4 time and consists of eighth and quarter notes.

Menuetto da capo



IV

Molto Allegro.

8
f

19
5

33
17
f
37
f
3

99
7

117
2
sf

129
3

142
5

158
14
f
5
2
2

187
4
f
3
f
25
frummu
p

227
p
f
16



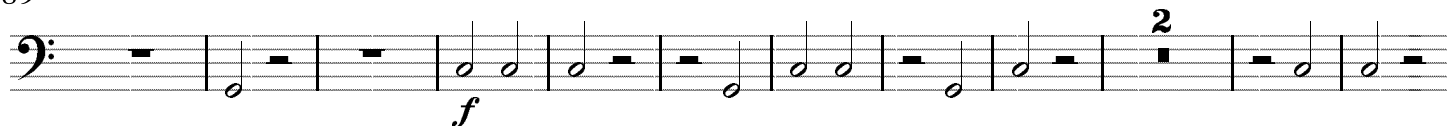
253



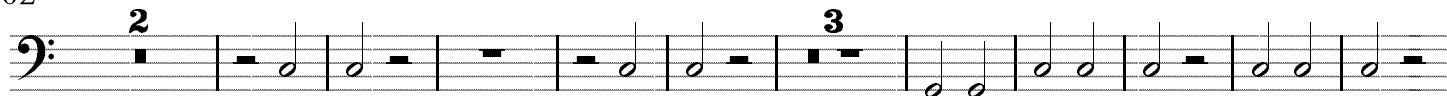
267



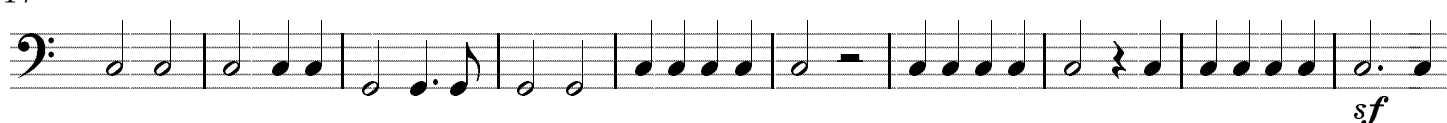
289



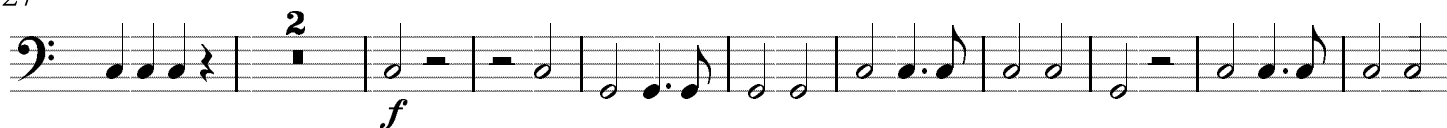
302



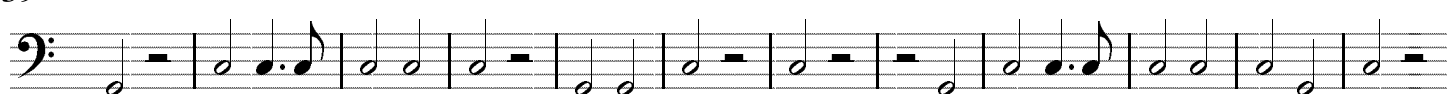
317



327



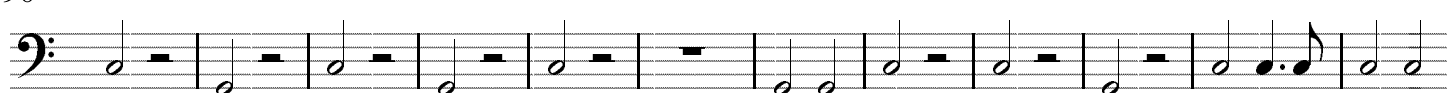
339



351



390



402



417

