

# **Mozart Symphony No. 40 in G-minor, first version, K.550**

## **Horn II in B-flat**



# Mozart Symphony No. 40 in G-minor, first version, K.550

## Horn II in B-flat

Molto Allegro

15 *f* *sf*

35 *sf sf sf sf sf* *p* *cresc.* *f*

80 *f* 4 2 3

95 13

115 *f*

124 3 2

136 14 *sf sf sf sf sf*

159 3 *p* *f* 12





## II.

Andante

Musical score for Horn 2, measures 1-118. The score is in 6/8 time and G minor. It features various dynamics (p, f, sf) and articulations (accents, slurs). Fingerings are indicated by numbers 3, 6, 7, and 13. The piece concludes with a double bar line.

Measures 1-10: *p*, 3

Measures 11-33: *f*, 3, 13

Measures 34-48: *f*, 7

Measures 49-59: *f*, 3

Measures 60-70: *p*, 3

Measures 71-83: *f*, *p*, 6

Measures 84-96: *sf*, *sf*, 6

Measures 97-117: *f*, 7

Measures 118: *p*



# III.

## Allegretto

8

15

28

36

60

74

*f*

*p*

*cresc.*

*f*

*p*

Trio

D.C. Menuetto

# IV.

Allegro assai

Musical score for Horn 2, measures 1-233. The score is in 4/4 time and features various dynamics and articulations. The notation includes eighth notes, quarter notes, and half notes, with some measures containing rests. The score is divided into systems, with measure numbers 10, 20, 31, 41, 57, 121, 202, and 213 marking the beginning of new systems. Dynamics include *f* (forte), *sf* (sforzando), and *f* (forte). Articulations include accents and slurs. The score concludes with a double bar line and repeat signs at measure 213.



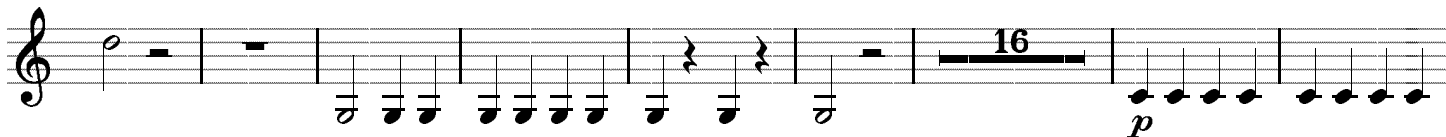
223



232



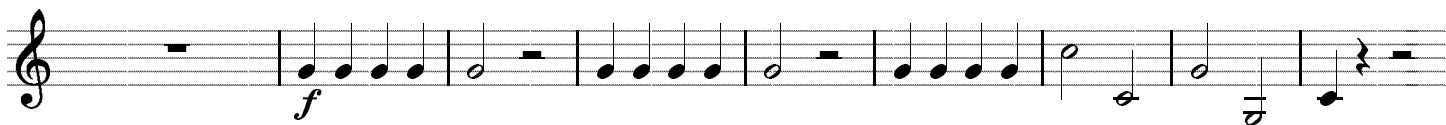
241



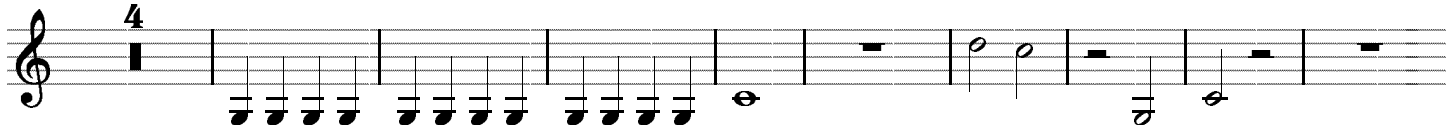
265



277



286



299

