

W.A. Mozart

Symphony No. 39 in E-flat Major, K.543

Viola



Mozart Symphony No. 39 in E-flat Major, K.543

Viola

Adagio

Measures 9-25 of the Adagio section. The score is in E-flat major (two flats) and 4/4 time. It begins with a dynamic of *f* (forte) and includes a *p* (piano) dynamic. The music features a mix of quarter and eighth notes, with some triplet markings. A fermata is present over measure 25. The section concludes with a 3/4 time signature change.

Allegro

Measures 26-74 of the Allegro section. The score is in E-flat major and 3/4 time. It begins with a dynamic of *p* (piano) and includes a *f* (forte) dynamic. The music is characterized by eighth-note patterns and triplet markings. A *ten.* (tension) marking is present in measure 65. The section ends with a fermata over measure 74.



84

91

107

117

126

133

140

146

155

167

176

193



204

214

221

230

240

246

252

271

280

287

295

304



II.

Andante con moto

11 *p*

20

31 *f*

39

46 *p*

52 *f*

65 *f* *p*

75 *p*

84

94 *f*

102



110

117

123

132

143

153

III.

Allegro

12

24

36

45

58

Men. D.C.



IV.

Allegro

8

13

22

32

42

12

66

75

86

93

100

f

p

sf sf sf sf

f

8



115 *f*

126

132

161 *f*

166

175

184 6

198 *p*

204 *sf sf sf f*

216

224 *p*



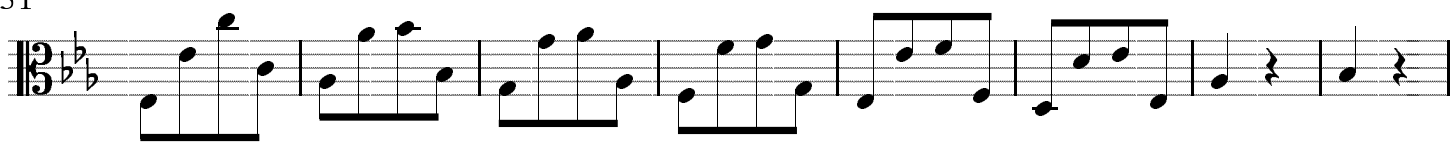
235



243



251



259

