

Mozart Symphony No. 6 in F-major, K.43 (1767)

Violin I



Mozart Symphony No. 6 in F-major, K.43 (1767)

Violin I

Allegro

6

12

20

27

32

38

44

f *p* *cresc.* *f* *p* *fp* *f* *tr*



50

p *f*

58

p

66

f *p* *f* *tr*

72

p

79

84

f *fp* *fp* *fp* *fp* *fp* *fp*

90

fp *tr*

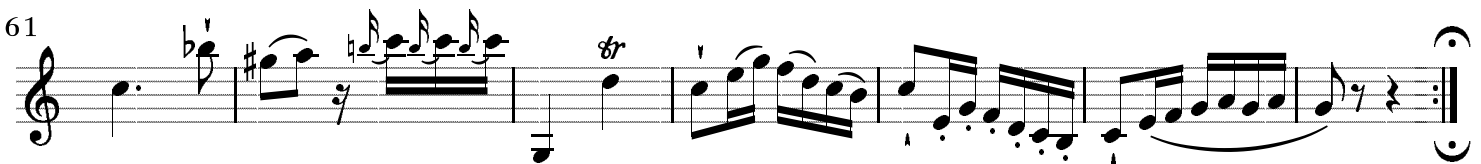
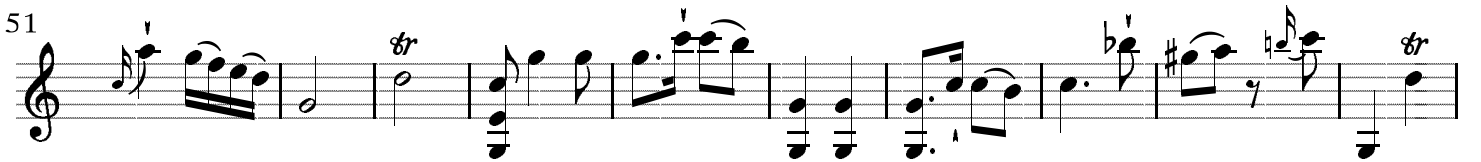
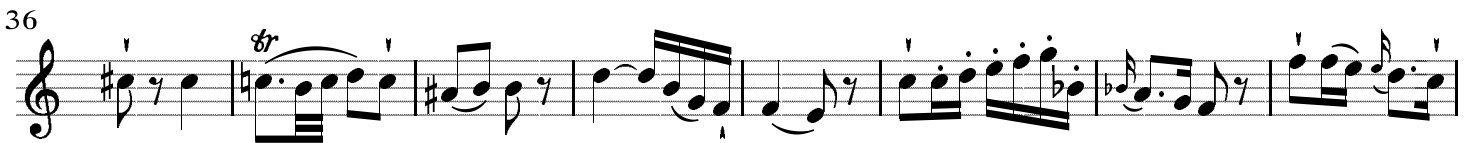
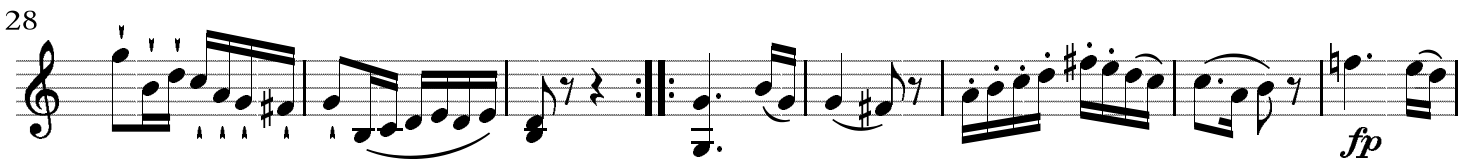
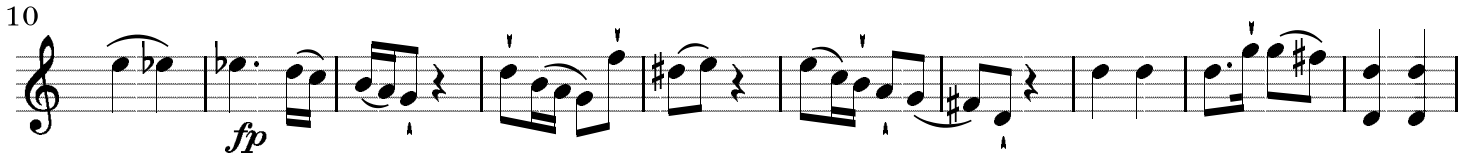
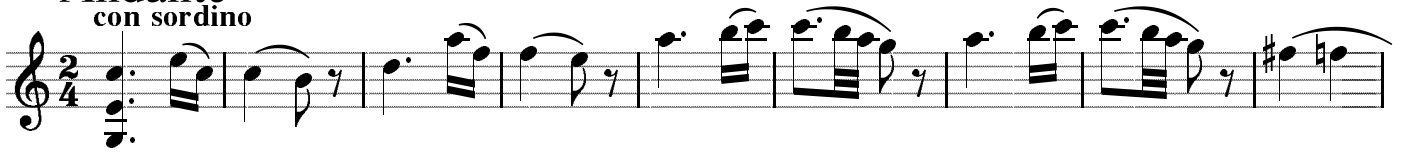
96

tr



II.

Andante
con sordino



III.

Menuetto

Musical score for Violin I, Menuetto, Trio section. The score is in 3/4 time and F major. It consists of five staves of music. The first staff (measures 1-6) begins with a forte (*f*) dynamic and features a triplet of eighth notes. The second staff (measures 7-13) includes a repeat sign and continues with triplet patterns. The third staff (measures 14-20) is the beginning of the Trio section, marked with a piano (*p*) dynamic and a key signature change to E-flat major. The fourth staff (measures 21-28) features a forte (*f*) dynamic. The fifth staff (measures 29-35) concludes with dynamics of piano (*p*), fortissimo piano (*fp*), piano (*p*), and fortissimo piano (*fp*), ending with a repeat sign and the instruction "Menuetto da capo".



IV.

Allegro



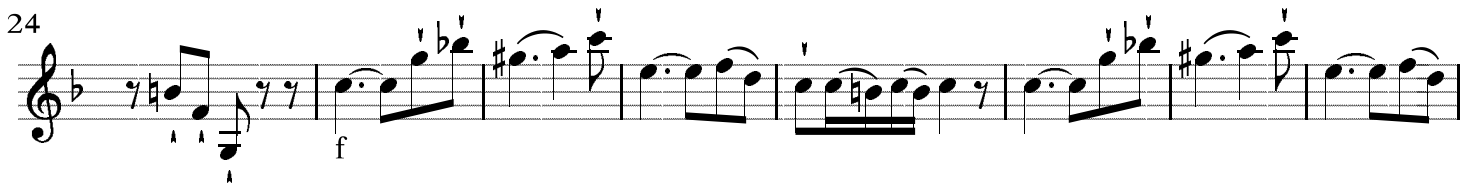
Musical staff 1-9, starting with a treble clef and a key signature of one flat (B-flat). The time signature is 6/8. The music begins with a piano (*f*) dynamic marking. The staff contains nine measures of music with various rhythmic patterns and articulations.



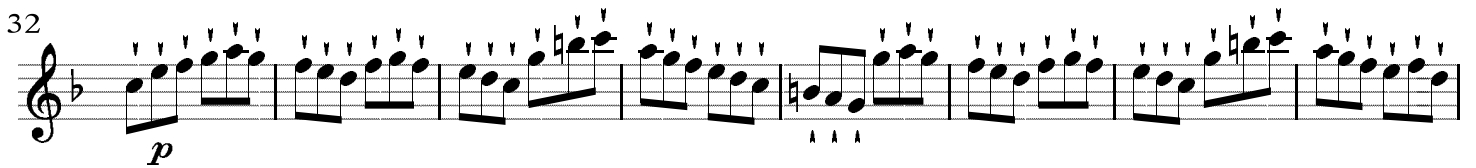
Musical staff 10-16, starting with a treble clef and a key signature of one flat. The staff contains seven measures of music, including a double bar line and a repeat sign. Dynamics include piano (*p*) and forte (*f*).



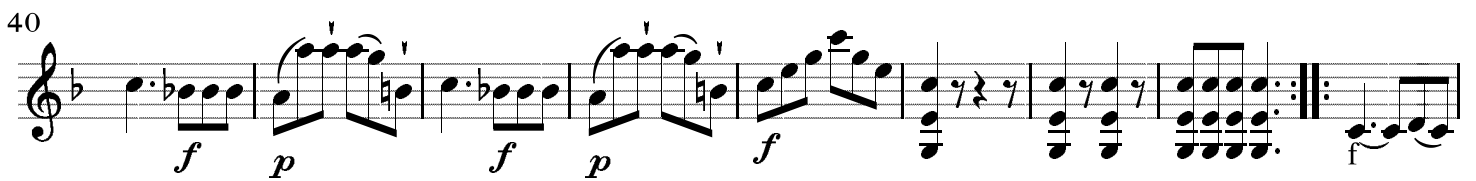
Musical staff 17-23, starting with a treble clef and a key signature of one flat. The staff contains seven measures of music. Dynamics include piano (*p*) and forte (*f*).



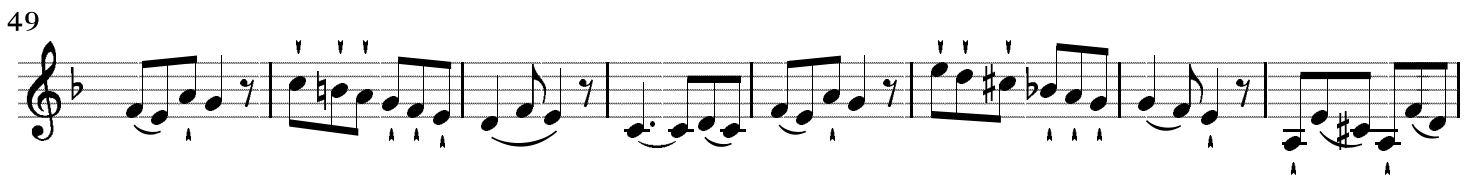
Musical staff 24-31, starting with a treble clef and a key signature of one flat. The staff contains eight measures of music, including a double bar line and a repeat sign. Dynamics include forte (*f*).



Musical staff 32-39, starting with a treble clef and a key signature of one flat. The staff contains eight measures of music. Dynamics include piano (*p*) and forte (*f*).



Musical staff 40-48, starting with a treble clef and a key signature of one flat. The staff contains nine measures of music, including a double bar line and a repeat sign. Dynamics include forte (*f*) and piano (*p*).



Musical staff 49-56, starting with a treble clef and a key signature of one flat. The staff contains eight measures of music. Dynamics include piano (*p*) and forte (*f*).



Musical staff 57-64, starting with a treble clef and a key signature of one flat. The staff contains eight measures of music. Dynamics include piano (*p*), fortissimo (*fp*), and forte (*f*).



65

p

72

f p *f*

79

f p *f*

87

p

96

f

104

p *f* *p* *f*

