

W.A. Mozart

Symphony No. 35 in D Major, K385

Violin II



# I.

Allegro con spirito

The image displays a page of musical notation for the Violin 2 part of the first movement of Mozart's Symphony No. 35 in D major. The score is written in treble clef with a key signature of two sharps (D major) and a common time signature. The tempo is marked 'Allegro con spirito'. The music begins with a dynamic of *f* (forte) and includes various articulations such as accents, staccato (*stacc.*), and slurs. The dynamics fluctuate throughout the piece, including *p* (piano), *fp* (fortissimo), and *f*. The notation features a variety of rhythmic patterns, including eighth and sixteenth notes, as well as rests. Measure numbers 8, 16, 21, 26, 31, 39, 43, 47, and 52 are indicated at the start of their respective lines.



59 *f*

66

71 *p*

76 *f* *sf*

79 *sf* *sf* *sf* *sf* *sf*

85 *sf* *sf*

91

97 *tr* *tr* *tr* *p*

103

110 *f*

118 *p* *p*

124 *tr* *tr*

131 *f* *p*

Detailed description: This is a page of a musical score for Violin 2, measures 59 to 131. The key signature is D major (two sharps). The score is written on a single staff. It begins with a forte (*f*) dynamic at measure 59. Measure 66 is marked with a forte (*f*) dynamic. Measure 71 is marked with a piano (*p*) dynamic. Measure 76 is marked with forte (*f*) and sforzando (*sf*) dynamics. Measures 79-85 feature repeated sforzando (*sf*) markings. Measure 97 includes trills (*tr*) and a piano (*p*) dynamic. Measure 103 is marked with a piano (*p*) dynamic. Measure 110 is marked with a forte (*f*) dynamic. Measure 118 is marked with piano (*p*) dynamics. Measure 124 includes trills (*tr*). Measure 131 is marked with forte (*f*) and piano (*p*) dynamics.



137

145

149

155

157

164

171

176

181

184

189

194

200



## II.

### Andante

6 *p* *f* *p*

10 *f* *p*

14

18 *p*

21 *f*

25 *p*

30 *ff* *fp* *fp* *p*

37

42 *f* *p* *f*

46



50

54

58

62

65

69

72

76

80



### III.

9

15

23

Trio

29

38

46

*f* *p* *f* *p* *p* *sf* *p* *cresc.* *p* *p* *sf* *sf*

Menuetto da Capo



# IV.

Presto

7 *p*

14 *f*

20

25

30

36 *sf sf*

44 *sf p fp fp*

50 *fp p*

56

62 *cresc. f*

68 *fp fp fp fp fp fp f sfp*

*sfp sfp p fp*





77

84 *p*

90 *f*

96 *p* *f* *p*

102 *f* *p* *f*

109 *p* *f*

117 *p* *fp* *fp*

122 *fp*

129

134

139 *p*

145 *f*



151

157

162

167

172

177

184

191

196

202

208

214

*sf* *sf* *p* *fp*

*fp*

*f* *cresc.* *f* *tr*

*fp* *fp* *fp* *fp* *f* *sfp* *sfp* *sfp*

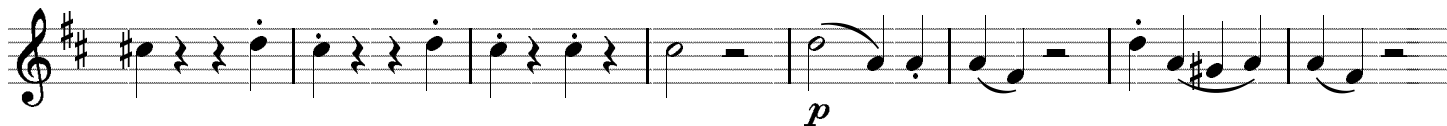
*sfp* *p* *p*



221



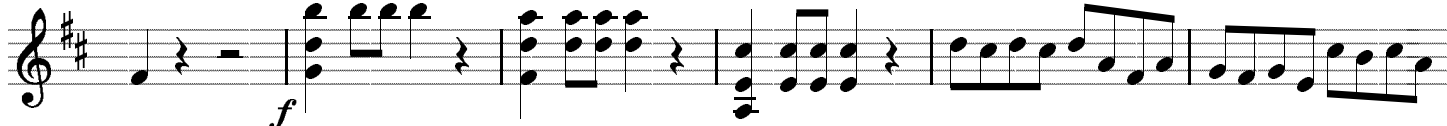
228



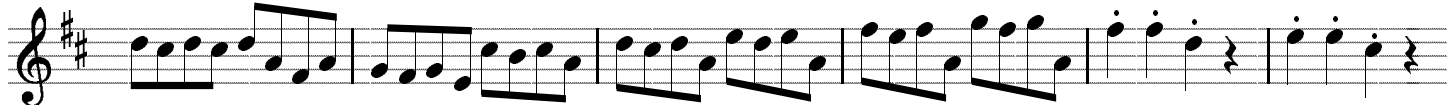
236



243



249



255



260

