

Mozart Symphony No. 4 in D Major, K. 19 (1765)

Violoncello



Mozart Symphony No. 4 in D Major, K. 19 (1765)

Violoncello

Allegro

Violoncello part of Mozart's Symphony No. 4 in D Major, K. 19, measures 1-40. The music is in 4/4 time, D major, and marked Allegro. The part features a variety of dynamics including *f* (forte), *p* (piano), and *f* (forte), and includes a double bar line with a repeat sign at measure 21.

Measures 1-5: *f* (forte) dynamics.

Measures 6-10: *p* (piano) dynamics.

Measures 11-15: *f* (forte) dynamics.

Measures 16-20: *p* (piano) and *f* (forte) dynamics.

Measures 21-25: *f* (forte) dynamics.

Measures 26-30: *p* (piano) dynamics.

Measures 31-35: *f* (forte) dynamics.

Measures 36-40: *p* (piano) dynamics.



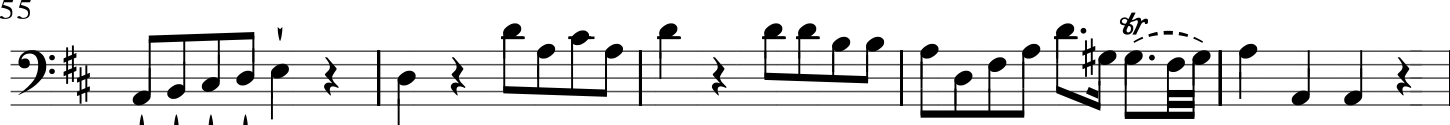
44



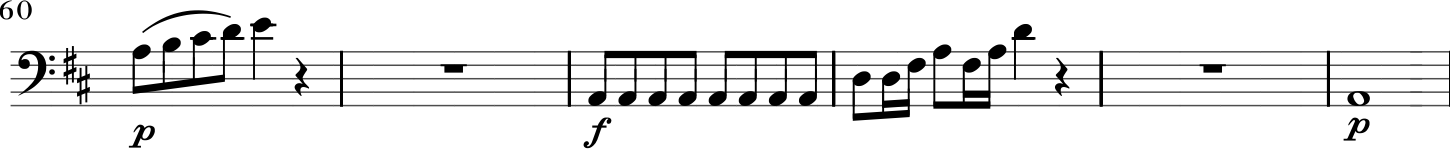
50



55



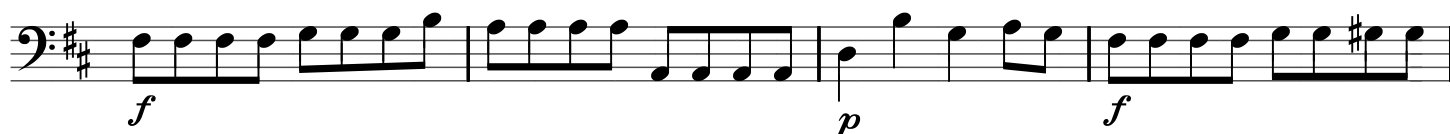
60



66



71



75



II.

Andante

sempre *p*

10 *fp* *fp* *fp* 3 3

20 *mf* *p*

28

37 *fp* *fp* *fp* 3 3

III.

Presto

11 *f* *p*

21 *f* *p* *f* *p*

31 *f* *p* *f*

43 *p* *mf* *fp* *fp* *fp* *f*

54

62

71

80

89

98

