

Concerto No. 8 in A Minor (RV 522)

Allegro

5

12

18

23

29

39

44

51

55

p

p

f

6

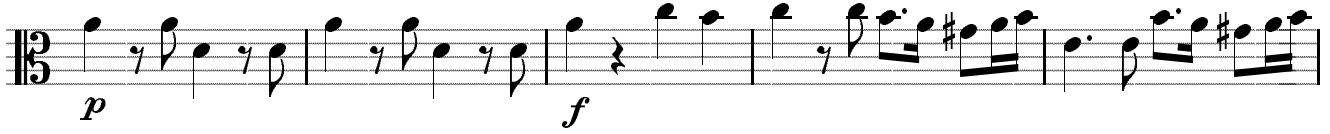
2

Detailed description: This is a page of a musical score for the first movement of Vivaldi's Concerto No. 8 in A Minor (RV 522). The music is in 3/8 time and A minor. The tempo is marked 'Allegro'. The score is written on ten staves. The first staff begins with a treble clef, a common time signature, and a key signature of one flat. The music features a variety of rhythmic patterns, including eighth and sixteenth notes, and rests. Dynamics are indicated by 'p' (piano) and 'f' (forte). There are also articulation marks such as slurs and accents. The score includes measure numbers 5, 12, 18, 23, 29, 39, 44, 51, and 55. At the end of the first staff, there is a measure with a '6' written below it, and at the end of the second staff, there is a measure with a '2' written below it.

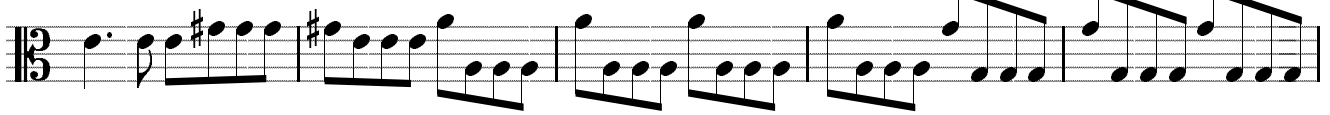
60



66



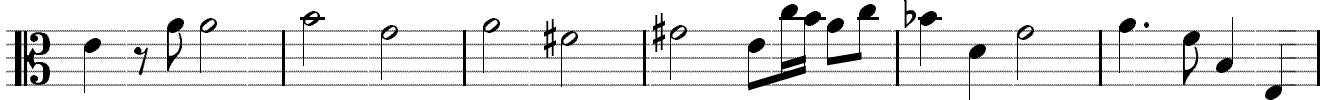
71



76



80



86



Larghetto e spiritoso



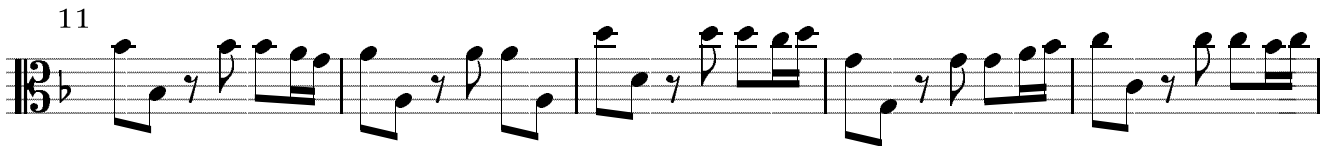
pp sempre

First musical staff, measures 1-5. The music is in 3/4 time with a key signature of one flat. It features a rhythmic pattern of eighth notes and quarter notes, often with slurs and accents. The dynamic marking *pp* and the instruction *sempre* are present.



6

Second musical staff, measures 6-10. Continues the rhythmic pattern from the first staff.



11

Third musical staff, measures 11-15. Continues the rhythmic pattern.



16

Fourth musical staff, measures 16-20. Continues the rhythmic pattern.



21

Fifth musical staff, measures 21-25. Continues the rhythmic pattern.



26

Sixth musical staff, measures 26-30. Continues the rhythmic pattern.



31

Seventh musical staff, measures 31-35. Continues the rhythmic pattern.



36

Eighth musical staff, measures 36-40. Continues the rhythmic pattern.



41

f

Ninth musical staff, measures 41-45. Continues the rhythmic pattern, ending with a fermata on the final note. The dynamic marking *f* is present.

Allegro

4

12

15

35

13

p

59

f *p* *f* *p* *f*

68

b

76

#

85

27

spiccato *p*

119

f

129

f

139

f

