

# Mozart Symphony No. 41 in C Major ("Jupiter"), K. 551

## Timpani in C, G

Allegro vivace.

The musical score for the Timpani part in C, G, is written in bass clef with a 4/4 time signature. It consists of ten staves of music, each starting with a measure number on the left. The notation includes various rhythmic values (quarter, eighth, and sixteenth notes), rests, and dynamic markings such as *f*, *sf*, and *p*. There are also numerical markings (13, 34, 50, 20, 5, 13, 25) placed above the staves, likely indicating specific measures or patterns. The score is marked with a fermata over the final note of the first staff and a fermata over the final note of the tenth staff.



269

*f*

2

This staff contains measures 269 through 278. It begins with a dynamic marking of *f*. A fermata is placed over the second measure, with a '2' above it. The music consists of eighth and sixteenth notes.

279

*sf sf*

This staff contains measures 279 through 287. It features dynamic markings of *sf* in measures 280 and 281. The music continues with eighth and sixteenth notes.

288

*p*

3

This staff contains measures 288 through 298. It starts with a dynamic marking of *p*. A fermata is placed over the first measure, with a '3' above it. The music includes eighth and sixteenth notes.

299

*f*

This staff contains measures 299 through 305. It begins with a dynamic marking of *f*. The music consists of eighth and sixteenth notes.

306

*tr ~*

This staff contains measures 306 through 312. It features a trill marking (*tr ~*) in measure 311. The music ends with a double bar line.

II  
Tacet

III  
Allegretto.

*p* *f*

2

This staff contains measures 1 through 12. It starts with a dynamic marking of *p* and ends with *f*. A fermata is placed over the first measure, with a '2' above it. The music is in 3/4 time.

13

*p*

This staff contains measures 13 through 23. It begins with a dynamic marking of *p*. The music consists of eighth and sixteenth notes.

24

*f*

5

This staff contains measures 24 through 38. It starts with a dynamic marking of *f*. A fermata is placed over the last measure, with a '5' above it. The music consists of eighth and sixteenth notes.

39

*f*

8

This staff contains measures 39 through 56. It begins with a dynamic marking of *f*. A fermata is placed over the 18th measure, with an '8' above it. The music consists of eighth and sixteenth notes.

57

Trio

6 19

This staff contains measures 57 through 66. It starts with a dynamic marking of *f*. A fermata is placed over the 19th measure, with a '19' above it. The music is in 3/4 time.

Menuetto da capo



# IV

Molto Allegro.

8  
*f*

19  
5

33  
17  
*f*  
37  
*f*  
3

99  
7

117  
2  
*sf*

129  
3

142  
5

158  
14  
*f*  
5  
2  
2

187  
4  
*f*  
3  
*f*  
25  
*frummu*  
*p*

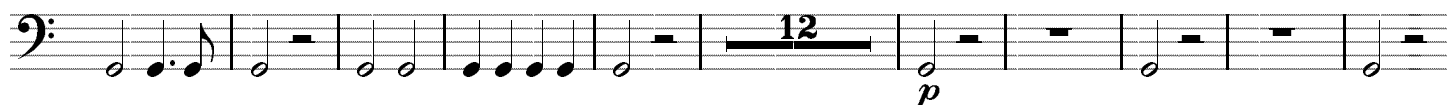
227  
*p*  
*f*  
16



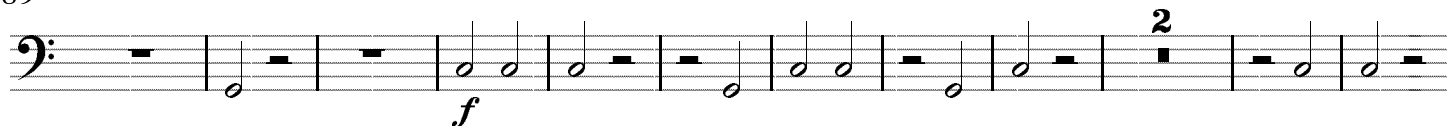
253



267



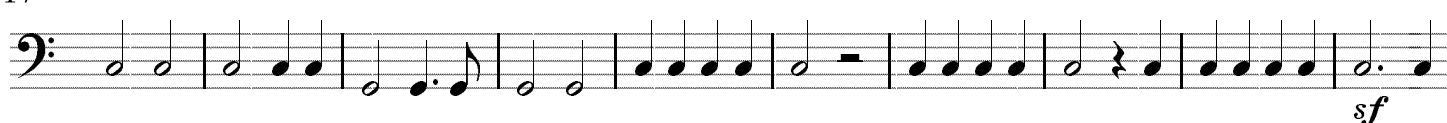
289



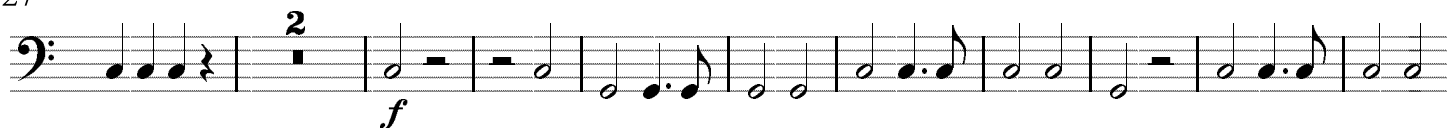
302



317



327



339



351



390



402



417

